

SSFA comparison

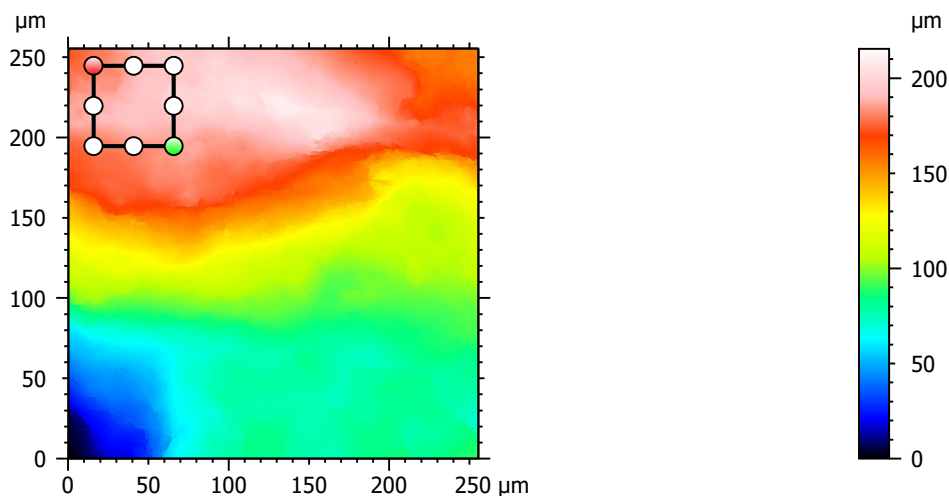
Template to process all lithic surfaces acquired with the Zeiss LSM 800 with the 50x/0.95 objective.

A. Processing

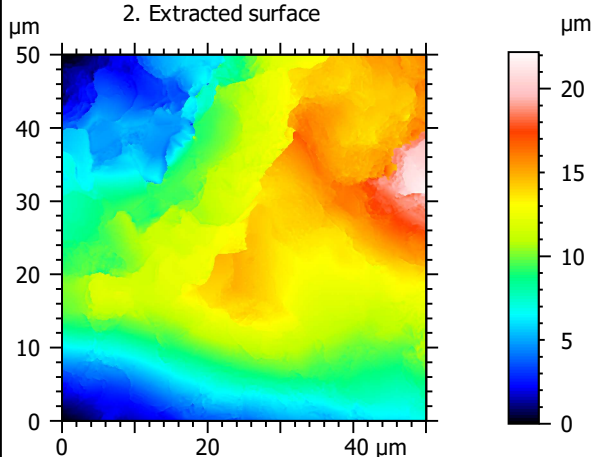
Identity card

| | | | |
|------------------|---|--------|--|
| Name: | QTZ3-13_LSM2_50x-0.95_20190822_Area2_Topo | | |
| File path: | D:\Data\3Ddata\SSFA\Lithics\Original surfaces\QTZ3-13_LSM2_50x-0.95_20190822_Area2_Topo.sur | | |
| Created on: | 8/22/2019 1:28:38 PM | | |
| Studiable type: | Surface | | |
| Axis: | X | | |
| Length: | 255.5 | μm | |
| Size: | 3000 | points | |
| Spacing: | 0.08519 | μm | |
| Axis: | Y | | |
| Length: | 255.5 | μm | |
| Size: | 3000 | points | |
| Spacing: | 0.08519 | μm | |
| Axis: | Z | | |
| Layer type: | Topography | | |
| Length: | 215.4 | μm | |
| Size: | 65532 | digits | |
| Spacing: | 0.003287 | μm | |
| NM-points ratio: | 0.000 % (0 Pts) | | |

1. Acquired surface

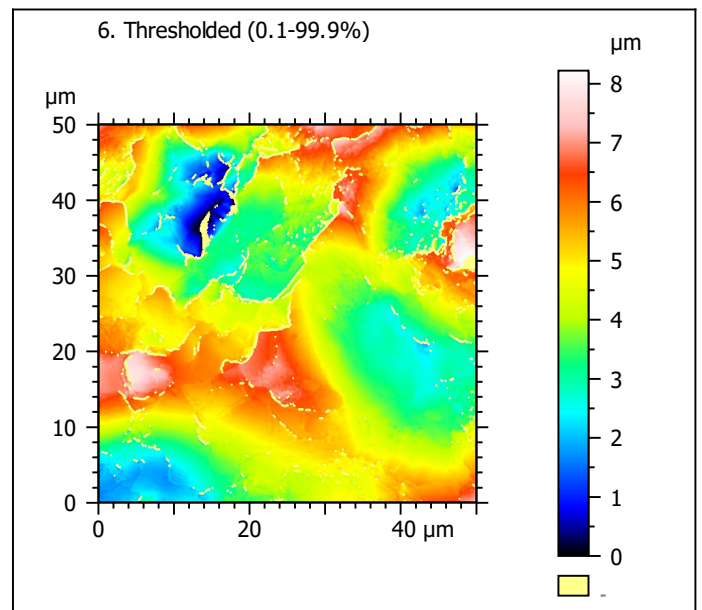
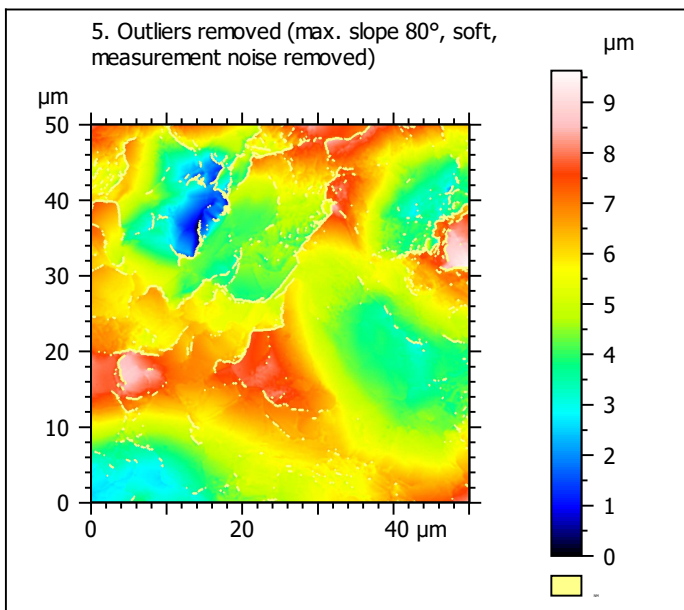
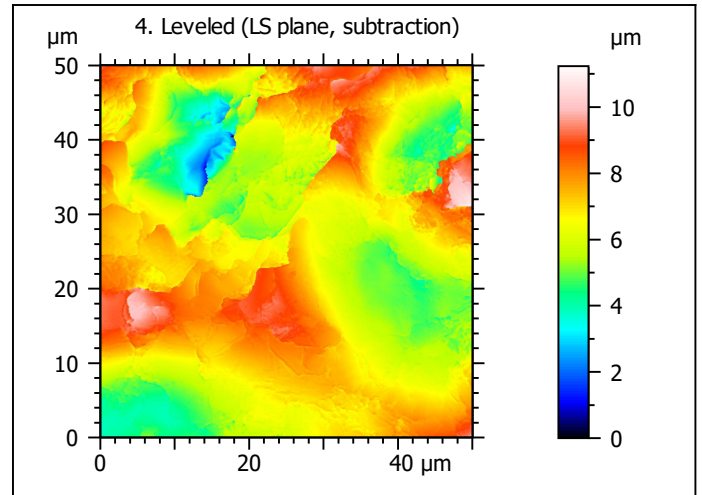
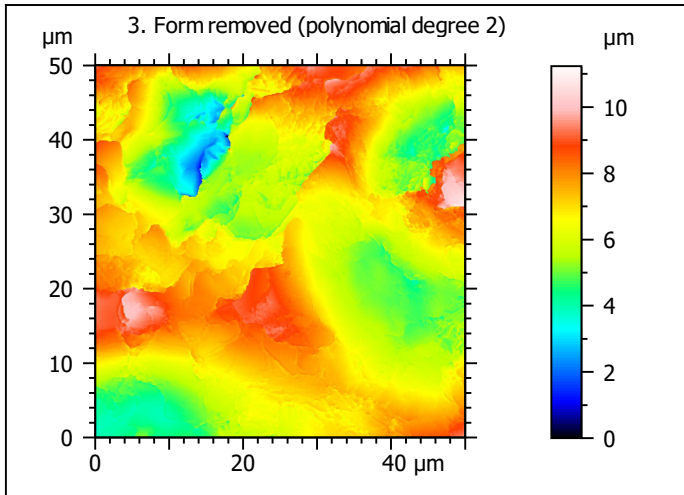


2. Extracted surface



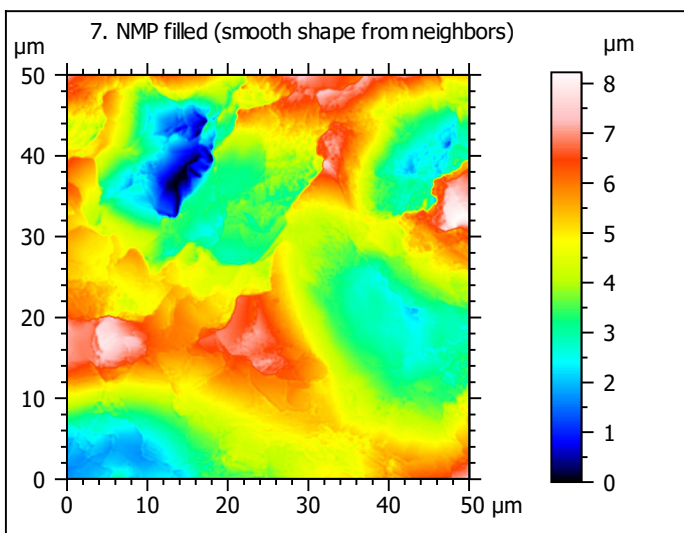
Identity card

| | | | | |
|------------------|-----------------|---|--|--|
| Name: | | QTZ3-13_LSM2_50x-0...opo > Extracted area | | |
| Axis: | | X | | |
| Length: | 50.00 | μm | | |
| Size: | 588 | points | | |
| Axis: | | Y | | |
| Length: | 50.00 | μm | | |
| Size: | 588 | points | | |
| Axis: | | Z | | |
| Layer type: | Topography | | | |
| Length: | 22.19 | μm | | |
| Size: | 6749 | digits | | |
| NM-points ratio: | 0.000 % (0 Pts) | | | |

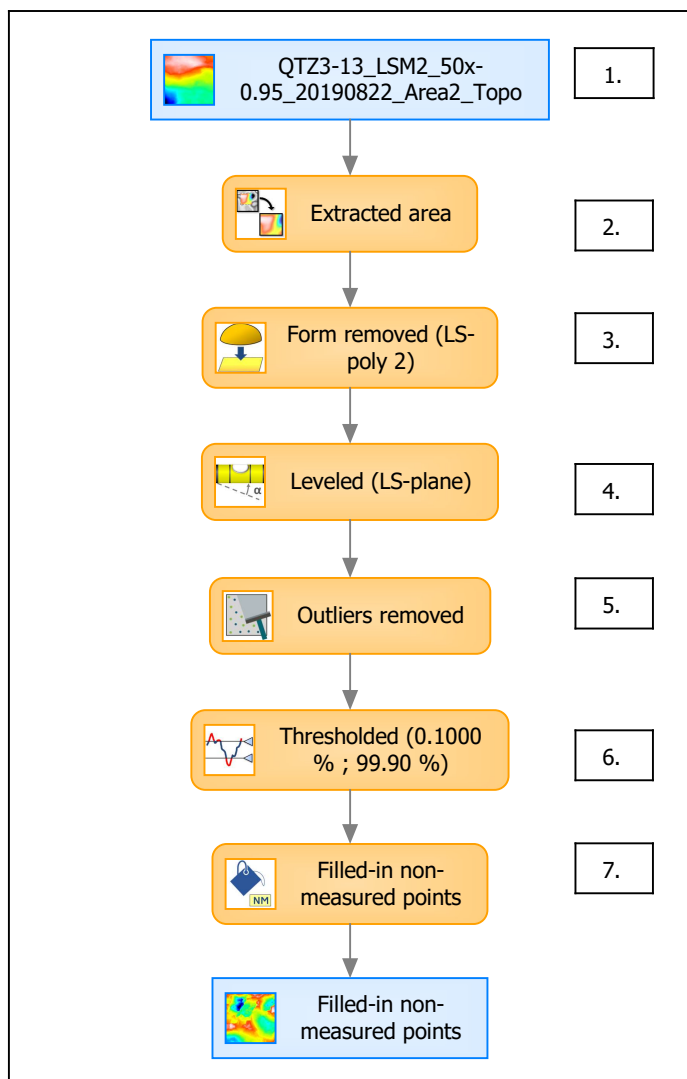


| Identity card | |
|------------------|--|
| Name: | QTZ3-13_LSM2_50x-0...e) > Outliers removed |
| Axis: | Z |
| NM-points ratio: | 5.613 % (19407 Pts) |

| Identity card | |
|------------------|--|
| Name: | QTZ3-13_LSM2_50x-0...0.1000 % ; 99.90 %) |
| Axis: | Z |
| NM-points ratio: | 5.800 % (20054 Pts) |



B. Summary



Identity card

Name: QTZ3-13_LSM2_50x-0.95_20190822_Area2_Topo > Extracted ar...resholded (0.1000 % ; 99.90 %) > Filled-in non-measured points

Studiabale type: Surface

Axis: X

Length: 50.00 μm
Size: 588 points
Spacing: 0.08519 μm

Axis: Y

Length: 50.00 μm
Size: 588 points
Spacing: 0.08519 μm

Axis: Z

Layer type: Topography

Length: 8.222 μm
Size: 2501 digits
Spacing: 0.003287 μm

